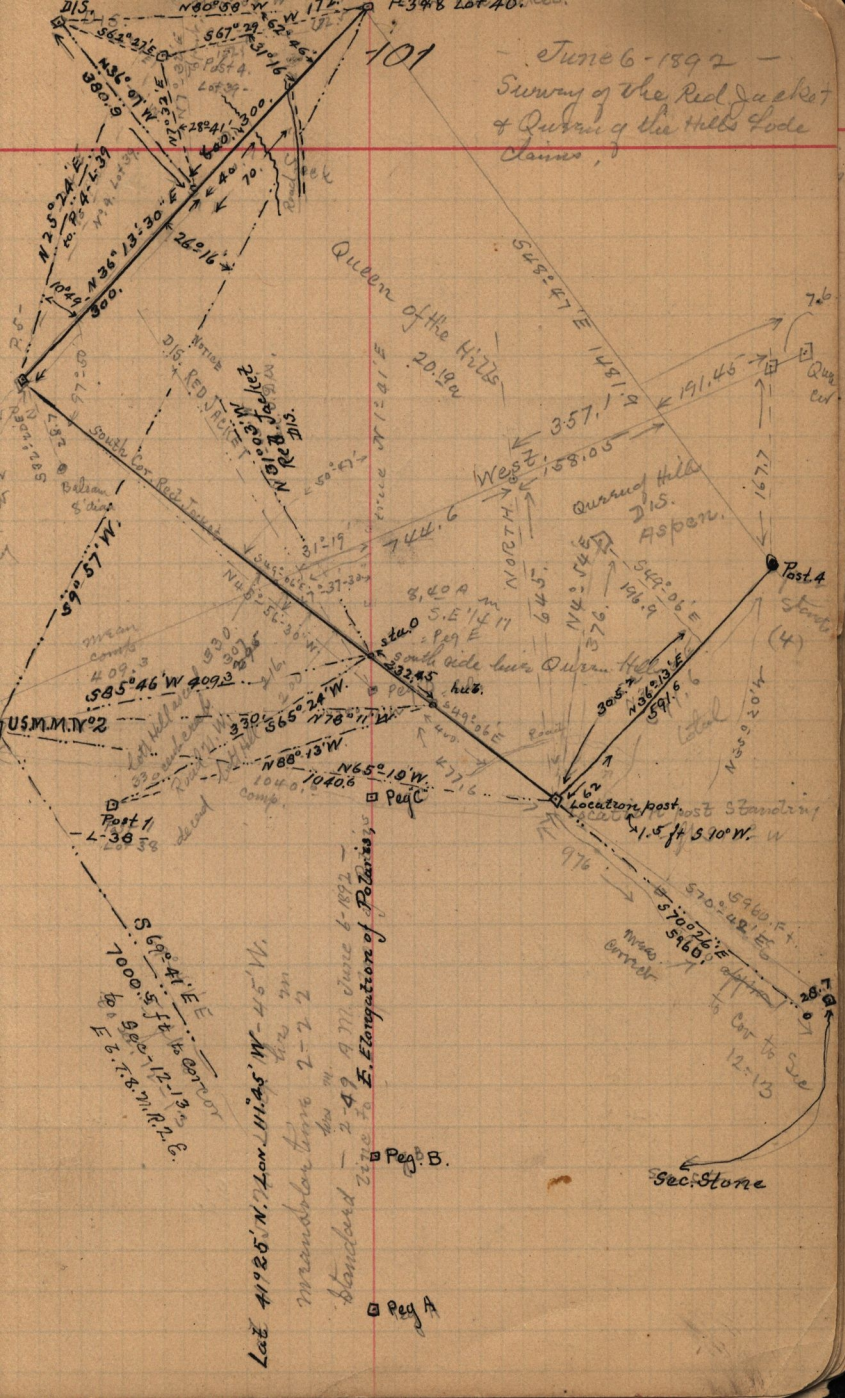


June 6 - 1892
Survey of the Red Jacket
& Queen of the Hills
Claims



101

Queen of the Hills
20.19 a

Currant Hills
Dis. Aspen.

DIST. RED JACKET
N 50° 13' 30" E 262.16'

US.M.M.T.V. 2
S 9° 57' W, 585° 46' W 409.3

Post 1
L-38 58

S 69° 41' E
7000.5 ft to corner
E 7° 7.8' N.R. 2.6.

Lat 41° 25' N. Lon. 114° 5' W - 45' W.
mandator time 2-22
standard time 2-49
E. Elevation of Potlatch
2-49

Peg B

Peg A

Post A
Stamb
(4)

Locatort post
1.5 ft S 10° W

Sec. Stone

7.6

Qua
cut

West
158.05

7.6

167.7

191.45

1481.9

357.19

744.6

312.19

744.6

1212.3

312.19

744.6

1212.3

312.19

744.6

1212.3

312.19

744.6

1212.3

312.19

744.6